



Meet Our Brand



- ➔ **YOUR LEADING SAFETY WHIP MANUFACTURER!**
- ➔ Field-Proven for over 17 Years
- ➔ Most Dependable & Visible Whips in the Industry
- ➔ Various Safety Driven Whip Solutions for Harsh Environments
- ➔ Advanced LED Light Technology
- ➔ Premium UV Protected Fiberglass
- ➔ Customizable Whip Assemblies
- ➔ Manufactured in the USA





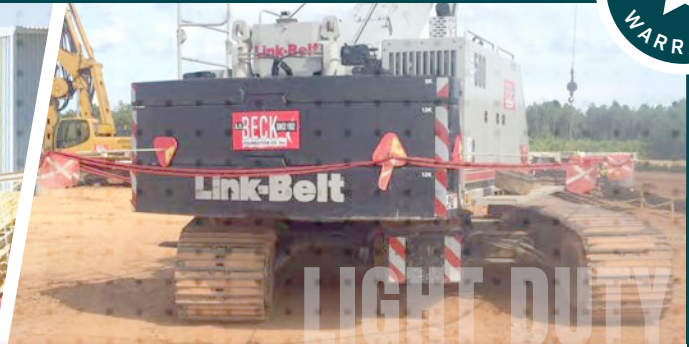
A brand of **DRIVER**
INDUSTRIAL SAFETY

PREMIER, MADE IN THE USA WARNING WHIPS

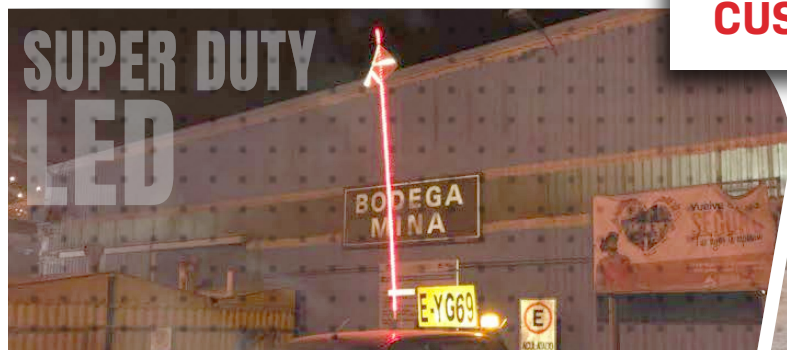
SPECS-AT-A-GLANCE



SAFETY WHIPS



LEADING WHIP MANUFACTURER
PREMIUM HEAVY DUTY FIBERGLASS
CUSTOMIZABLE WHIP ASSEMBLIES



FEATURING Advanced LED Light Technology!

HIGHLIGHTS

- ENGINEERED & MANUFACTURED IN THE USA
- GLOBALLY RECOGNIZED as the Most Dependable & Most Visible brand of Warning Whip & Safety Solutions on the Market
 - Built to withstand the most severe weather, even remote locations
- Constructed with PREMIUM UV Protected Fiberglass Resin
 - Manufactured to provide highly visible rigidity & sufficient flexibility
- VARIOUS Warning Whip Types Offered
 - SUPER DUTY LED - standard lengths from 4ft up to 10ft
 - SUPER DUTY ALL WEATHER - standard lengths up to 12ft
 - HEAVY DUTY - standard lengths up to 12ft
 - TELESCOPING - standard lengths from 11ft up to 21ft
 - LIGHT DUTY - standard lengths from 2ft up to 7ft
- Powered & Non-Powered Options
- Threaded & Quick Disconnect Base Mount Options
- Single Piece, Split-Pole (Breakdown Whips), & Whip Extensions Available
- CUSTOMIZABLE Whip Assemblies to Cater to Specific Industry Needs
 - Multiple accessory & replacement parts to choose from - Safety Flags, LED whip lights, hitch mounts, and much more...
 - Custom whip lengths, accessories, & mounting options upon request
- Permanent & Temporary Mounting Options
- PERSONAL & TRAFFIC Safety Products Also Available
 - First Aid Cleanup Kits, Fire Extinguishers, Road Hazard Kits, 3M™ Tapes

Rev 1, Released: 6/29/22



8700 E Vista Bonita Drive, Suite 260
Scottsdale, AZ 85255 USA

T: 480.497.6136

E: rfq@coreaviation.com

W: www.coreaviation.com





A brand of **DRIVER**
INDUSTRIAL SAFETY

PREMIER, MADE IN THE USA WARNING WHIPS

SPECS-AT-A-GLANCE



WHIP TYPES		PRODUCT FEATURES & BENEFITS	POPULAR ACCESSORIES		
SUPER DUTY LED	6 Month Limited Warranty	<ul style="list-style-type: none">THE TOUGHEST, BRIGHTEST, MOST DURABLE LED Whip BuiltUp to 10ft/3.05m of Protected LED Lighting From Top To BottomDesigned with Premium LED Technology to MAXIMIZE VisibilityADVANCED IMPACT PROTECTION - Constructed of a Solid Fiberglass Internal Pole with Rugged Polycarbonate External TubingEngineered to Equalize Pressure while Blocking Water & ContaminantsStandard LED Colors: Amber, Red, Green, Blue, WhiteCustom Lengths, Colors, Accessories, & Mounting Options AvailableStandard Lengths: 5ft/1.52m, 8ft/2.44m, 10ft/3.05m	Quick Disconnect Conversion Kit Adapter Base SWQD-KIT-NP (non-powered, steel kit)	Heavy Duty Steel Hitch Mount HMSDA (powered with alarm)	Stake Pocket Mount SPM (for truck pockets)
	1 Year Limited Warranty	<ul style="list-style-type: none">ALL WEATHER, SUPER-SEALED, ROBUST; Built for Extreme ConditionsSuperior Fiberglass Resin Coated with Premium Heavy Duty FiberglassAdditional LOCKED-IN Shielding Components for Increased DurabilityLock & Seal™ Technology to Prevent Water & Contaminant ExposurePowered with 1156 Type Socket & Threaded Hex BaseCustomizable Assembly Setups to Ensure Complete Jobsite AccessStandard Lengths: 5ft/1.52m, 8ft/2.44m, 10ft/3.05m, 12ft/3.66m	Low Profile LED Whip Light SC3-G (green) SC3-GW (green/white)	Fold Down Mount w/Side Attachment FDSM (with side attachment)	Angle Bracket Mount ABM (permanent)
HEAVY DUTY	1 Year Limited Warranty	<ul style="list-style-type: none">MOST COMMON SOLD on the Market TodayRobust, Constructed with Heavy Duty Rigid FiberglassPowered & Non-Powered OptionsOffered as Single, 2-Piece or Split PoleThreaded Hex or Quick Disconnect BaseCustom Lengths, Accessories, Whip Extensions, & Mounting OptionsStandard Lengths: 5ft/1.52m, 8ft/2.44m, 10ft/3.05m, 12ft/3.66m	High Profile LED Whip Light SC4-FR (red) SC4-FAR (amber/red)	Temporary Magnet Mount 519.33LHR (powered with handle)	Heavy Duty Spring Base 519.30B (powered, zinc)
TELESCOPING	1 Year Limited Warranty	<ul style="list-style-type: none">EXTREMELY VERSATILE; Best Solution For Quick ChangesADJUSTABLE & USER-FRIENDLY (Easy to Extend & Collapse)(3) Sure-Lock™ Locking Sections for Safe & Speedy Height AdjustmentsBuilt with Rigid Wrapped Heavy Duty Fiberglass for Increased DurabilityPowered & Non-Powered OptionsVarious Accessory & Mounting Solutions to Enhance Fleet IdentificationStandard Lengths: 11ft/3.35m, 13ft/3.96m, 15ft/4.57m	Heavy Duty Flat Surface Mount TW-FMT (mounting holes, lock pin)	Heavy Duty Steel Hitch Mount HMTDA (powered with alarm)	Heavy Duty Side Mount UPMT (includes quick pin)
LIGHT DUTY	1 Year Limited Warranty	<ul style="list-style-type: none">MOST AFFORDABLEBuilt for all Light Duty Vehicle & Equipment NeedsConstructed with Premium FiberglassThreaded Hex Base or No Base (Quick Disconnect Adapters Available)Non-Powered OnlyVarious Safety Flags & Mounting Options for CustomizationStandard Lengths: 5ft/1.52m, 7ft/2.13m	Light Duty Window Mount LWW-Mount (temporary use bracket)	Heavy Duty Window Mount 519.320-V (for whips up to 8ft)	Light Duty Magnet Mount LWM-BH-100 (threaded insert)

SAFETY WHIPS

Rev 1, Released: 6/29/22



8700 E Vista Bonita Drive, Suite 260
Scottsdale, AZ 85255 USA

T: 480.497.6136
E: rfq@coreaviation.com
W: www.coreaviation.com

